



DOUBLETREE GUEST SUITES®

CHARLOTTE • SOUTH PARK

looks forward to welcoming guests of



6300 Morrison Boulevard, Charlotte, North Carolina 28211
704.364.2400 Sales ~ 704.927.0056 Fax ~ 704.362.0203
www.charlottesouthparksuites.doubletree.com



CHECK-IN

Our official check-in time is 3:00pm.
A warm, signature Doubletree chocolate chip cookie awaits you at check-in.



The Market Cafe

RESTAURANT ~ seats 72

Breakfast
6:30am – 11:00am

Lunch
11:00am – 1:30pm

Dinner
5:00-10:00pm

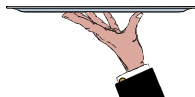


LOUNGE ~ seating for 24

Sunday through Thursday
4:30pm – 11:00pm

Friday & Saturday
4:30pm – Midnight

Food served in Banker's Club until closing.



SUITE SERVICE ~ In-Room Dining

Daily
6:00am – 11:00pm

YOUR SUITE



Each suite is comprised of 700+ square feet and includes a large living room with sofa bed, separate bedroom with king size bed (or two queen beds) and bathroom, separate kitchen including oven, full-size refrigerator, microwave, sink, dishwasher, utensils and dinnerware. For your sleep experience, we offer Sweet Dreams® by Doubletree with plush-top mattress, luxurious linens, down comforter and jumbo pillows. Our bedding has outer hypo allergenic covers ~ our pillows, comforters and bed toppers are 100% Down.

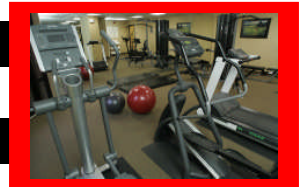
HILTON HHONORS®



Hilton HHonors® is the only hotel guest reward program that lets you earn both hotel points and airline miles for the same stay at more than 2,700 hotels worldwide. Not a Hilton HHonors® member? We have enrollment forms available at the Front Desk to remedy that!

FITNESS CENTER

Open 24/7 with Suite Key ~ Located on Ground Floor



BUSINESS CENTER

Open 24/7 ~ Located Lobby Level

GIFT SHOP

Open 24/7 ~ Located behind Front Desk

POOL

Outdoor Pool is open daily from 8:00am until 10:00pm in season.

ATM

Located in the Lobby

CALLS

- ☎ In order to dial from one suite to another, press 7 and the suite number.
- ☎ For outside access, press 9, then the number you wish to dial.

WAKE-UP CALL

If you wish to have an automated wake-up call, please dial 550.

HIGH-SPEED INTERNET ACCESS

All of our suites are equipped with wireless High-Speed Internet Access.

COURTESY VAN

Our six-seater van can be available to drop you off at local addresses within a three~mile radius of the hotel. Arrangements need to be made via the Front Desk.

BELL SERVICE

Available if required.

CAR PARKING

Complimentary

ELEVATORS

Please note our hotel is divided by our Garden Courtyard into two wings. The elevators in the Lobby access floors 1 to 3. The elevators located on the Ground Floor at the back entrance to the hotel access ALL floors.



TELEVISION CHANNEL GUIDE

The following channels are available for your enjoyment.

1	Movie Promo	12	FOX	23	ESPN2
2	Hotel Info	13	ESPN	24	CNN
3	Local Info	14	PBS	25	A&E
4	CBS	15	MTV	26	CNBC
5	CNN	16	VH1	27	MSNBC
6	WB	17	Comedy Central	28	Nat'l Geographic
7	NBC	18	Nickelodeon	29	TWC
8	UPN	19	Discovery	30	History Int'l
9	TNT	20	TBS	31	Fox News
10	ABC	21	Cartoon	32	Biography
11	USA	22	HBO	33	truTV
34	STARZ	35	Univision	36	FX
				37	NFL Network

ICE / VENDING MACHINES

Ice machines are located on the first and third floors. Beverage vending machines are located on the ground floor, second floor and fourth floor. For additional ice, glasses and/or food service, please call Suite Service. Touch 105.

DRY CLEANING / ON SITE LAUNDRY FACILITIES

Dry Cleaning: Same-day service is available Monday through Saturday for items picked up by 8:30 a.m. Laundry bags and lists are located in your closet. All items will be returned to your suites the same evening by 7:00 p.m. Please drop off at the bell desk or call for pick-up. Touch 103.

Self-Service Washers/Dryers: Are located on floors 3 & 4.

CARE LINE

If there is anything we may do to make your stay more comfortable, please contact the CARELINE for immediate attention. Touch 33.

CAR RENTAL



The company that has been #1 since it started in 1918 has a car rental desk located on the ground level at the hotel at the back entrance.

NEAREST MALL



4400 Sharon Road ~ Entrance to the Mall via Macy's is only steps away from our back door.

Open Monday to Saturday 10:00am ~ 9:00pm, Sunday 12:30pm ~ 6:00pm

More stores, more festivities, more reasons to celebrate! As the Carolina's premier shopping destination, SouthPark offers an experience like no other. SouthPark proudly welcomes the second Nordstrom in the Carolinas and Neiman Marcus in the Fall of 2006! SouthPark offers several other exclusive stores, including Abercrombie & Fitch, Anthropologie, Apple, Bob Ellis, Burberry, Cole Haan, Club Libby Lu, Frontgate, Kate Spade, Janie and Jack, Kenneth Cole, Lacoste, Lindt Chocolate, L'Occitane, Louis Vuitton, Origins, Pacific Sunwear, Sigrid Olsen, Salon Cielo & Spa, Sur La Table, Tommy Bahama and Tumi. Neiman Marcus and Crate & Barrel are the latest additions.

NEARBY SENSATIONAL SHOPPING



720 Governor Morrison, Suite E110 ~ One Block from SouthPark Mall ~ 704-364-4004
Hours of Operation ~ Mon-Sat 10am-6pm

For the last eleven years, B.D. Jeffries has earned their reputation as the premier source of fine alligator and crocodile accessories. They offer the largest available selection of alligator and crocodile accessories of any store in the world. As their business has grown, B.D. Jeffries has evolved into a lifestyle store. We cater to a clientele who not only appreciate fine alligator and crocodile products, but also enjoy the sporting life. We have a wonderful selection of practical and tasteful gifts, as well as accessories for the hunting, fishing, golfing, and equestrian enthusiast. Whether you have just returned from a fabulous trip bird hunting in South America or South Texas, shooting red grouse in Scotland, or cape buffalo in Africa, a great album or frame is always available to preserve those wonderful memories.



721 Governor Morrison Street ~ One Block from SouthPark Mall ~ 704-749-5042
Hours of Operation ~ Mon-Sat 7am-10pm; Sun 8am-9pm

Earth Fare, the leading natural & organic market, empowering people to make healthier choices for themselves, their communities and generations to come. The new 25,000 square foot market is now open for customers to enjoy many organic and natural offerings, including farm fresh fruits and vegetables, a wine shop with eclectic small vineyard selections, a gourmet cheese shop with over 250 varieties of European and American-Artisan cheeses, a full service meat and seafood department, on-site bakery and deli with ready-to-go-meal options, fully stocked grocery department with high end natural and organic grocery selections, and a nutrition and body care department featuring the highest quality supplements and personal care items.

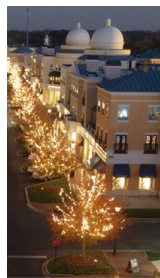


WILLIAMS-SONOMA

Specialty Shops on the Park, 6401 Morrison Boulevard
Across the Street from the Hotel ~ 704-364-8886

Offering special events that can enhance your enjoyment of cooking and entertaining:

- ◆ Cooking classes that spotlight the latest culinary trends.
- ◆ Expert demonstrations of cookware as well as techniques and tips for cooking and entertaining.
- ◆ Personal appearances and signings by celebrated chefs and cookbook authors.



Phillips Place ~ Redefining the Art of Shopping

You'll find outstanding restaurants, specialty retail, exciting apparel, and exquisite home furnishings, all set along an inviting main street against a backdrop of beautiful flowers, park benches, bubbling fountains, and Old World charm. It's the destination for finding all the special things you need. Home of the nearest Dean & DeLuca and the Dean & DeLuca Wine Room. Phillips Place is conveniently located in SouthPark at the intersection of Fairview Road and Cameron Valley Parkway, one-half mile west of SouthPark Mall.

NEAREST GYM



2101 Rexford Road ~ 2½ Blocks Away ~ 704-364-0400
Present your suite key for complimentary access.

SYMPHONY PARK



The hotel is adjacent to Symphony Park with its walking and jogging trails. During June, the Park is the venue for the Charlotte Symphony in the Park series of summer concerts.

TAXI

EXECUTIVE CAR SERVICE

704-525-2191 or the Front Desk will be happy to call on your behalf.

NEAREST HOSPITAL



CAROLINAS MEDICAL CENTER

Carolinus Medical Center (CMC) is the flagship facility of Carolinas HealthCare System.
1000 Blythe Boulevard ~ Emergency: 704-355-2171

WALK IN CLINIC

PRO-MED

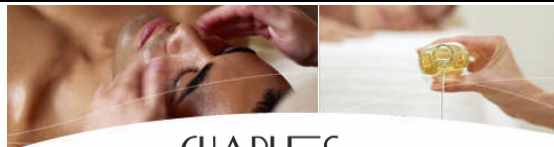
4917 South Boulevard ~ 704-395-0064

Monday to Friday
8:00am ~ 8:00pm

Saturday
8:00am ~ 6:00pm

Sunday
10:00am ~ 4:00pm

MASSAGE THERAPIST



CHARLES
GRAYSON
The Premier Collection of Spas, Salons & Boutiques

Specialty Shops on the Park ~ 6401 Morrison Blvd. ~ Across the street from the hotel

704~364~2944

Their philosophy is simple, they customize their services to suit the unique needs of each and every guest to deliver immediate and visible results that will make a real difference in your life. Some of their services and products include therapy systems and skincare, exclusive hair care, massage, spa massage and manicures, just to name a few.

CHIROPRACTOR

Dr. Elizabeth Averick

6226 Fairview Road ~ 704-362-5400

DENTIST

Betty Ostrow, DDS

10502 Park Road ~ 704~544~3363

NEAREST PHARMACY



With us, it's personal.

6231 Fairview Road ~ 704-553-1078 ~ Behind the hotel ~ Approx. 3.5 blocks

Store & Pharmacy Hours:

Monday to Saturday
8:00am ~ 10:00pm

Sunday
11:00am ~ 7:00pm

NEAREST POST OFFICE

Woodlawn Road in Park Road Shopping Center ~ 704-275-8777
We will be happy to frank your mail and post charges to your room.

NEAREST GROCERY STORE



Harris Teeter

Morrrocroft Village, 6701 Morrison Boulevard ~ 704-364-1245 ~ Open 24 Hours ~
Approx. 4 Blocks Away

NEAREST MOVIE THEATRE



10 Cinema Complex ~ 4711 Cameron Valley Parkway ~ 704-556-6843 ~ 1 Block East of
SouthPark Mall on Fairview

NEAREST BOOKSTORE



SouthPark Mall, 4345 Barclay Downs Drive ~ 704-602-9800 ~ Behind the Hotel ~
Open Monday to Saturday 9:00am ~ 10:00pm, Sunday 10:00am ~ 8:00pm

NEAREST COFFEE SHOP



SouthPark Mall, 4400 Sharon Road ~ 704-365-7523 ~ The Mall is 3 steps away from our back door.

PIZZA DELIVERY



704-523-1669 ~ Sunday to Thursday 11:00am ~ 1:00am, Friday & Saturday 11:00am ~ 2:00am

CHINESE DELIVERY



704-543-8868 ~ Sunday to Thursday 11:00am ~ 10:00pm, Friday & Saturday 11:00am ~ 10:30pm

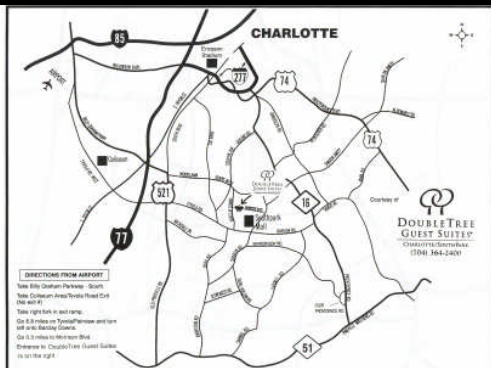
NEAREST 24 HOUR RESTAURANT

Come hungry.



134 West Woodlawn ~ 704-523-6388 ~ Approximately 3.9 miles

DIRECTIONS FROM THE AIRPORT AND INTERSTATES



You are in the airport:
Use the courtesy phone to dial 61 for Executive Car Service in baggage claim!
We are located in the heart of Charlotte's SouthPark area.
Doubletree Guest Suites Charlotte/SouthPark

From the Airport:

- Take Billy Graham Parkway south
- Then take Coliseum Area/Tyvola Road (no exit number)
- Go 6.8 miles on Tyvola/Fairview and turn left onto Barclay Downs
- Go 0.3 miles to Morrison Blvd and take a right
- Entrance to Doubletree Guest Suites Charlotte/SouthPark is on the right

From I-85 travelling South:

- Take Exit for I-77 South
- Take Tyvola Road Exit #5
- Turn left at lights at top
- Go 4.8 miles on Tyvola/Fairview and turn left onto Barclay Downs
- Go 0.3 miles to Morrison Blvd and take a right
- Entrance to Doubletree Guest Suites Charlotte/SouthPark is on the right

From I-77 travelling North or South:

- Tyvola Road Exit #5
- Turn right at lights if coming from I-77 North, turn left at lights if coming from I-77 South
- Go 4.8 miles on Tyvola/Fairview and turn left onto Barclay Downs
- Go 0.3 miles to Morrison Blvd and take a right
- Entrance to Doubletree Guest Suites Charlotte/SouthPark is on the right

LOCAL ATTRACTIONS

Ericsson Stadium...
the home for the Carolina Panthers

DISCOVERY PLACE
An exciting science museum that features interactive exhibits and an Omni Theater.

NC BLUEMONT CENTER FOR THE PERFORMING ARTS
Presents the best in Broadway and other acts coming to the Charlotte area.

Levine Museum of the New South
Visitors are awed by the interactive, multi-sensory exhibits at this museum dedicated to exploring the Southern United States during the post-Civil War period.

Charlotte Douglas International Airport
Airport is 7.5 miles from hotel.

THE SYMPHONY PARK
During the rest of the year, the Park provides excellent walking and jogging trails.

DOUBLE TREE GUEST SUITES®
CHARLOTTE/SOUTH PARK
6300 Morrison Boulevard
Charlotte, North Carolina 28211
704.364.2400
fax: 704.362.0203
www.charlottesouthparksuites.doubletree.com

NASCAR
The Smith Tower at Lowe's Motor Speedway ...the famed Charlotte speedway, this popular attraction serves as the site of NASCAR racing and other sporting events.

OVENS AUDITORIUM
Presents the best in Broadway and other acts coming to the Charlotte area.

MINT MUSEUM
Art galleries, electronic art in the cyber gallery, or check out kids' art and games in the children's gallery.

SouthPark Mall
SouthPark Mall, the Carolina's premier fashion destination, promises an experience like no other. SouthPark features over 100 specialty Stores, Nordstrom, Tiffany & Co., Sephora, Pottery Barn and St. John boutique are just a few of the exclusive shops at SouthPark. Pick up something new for Spring at J. Crew, Banana Republic, Gap or Ann Taylor. You'll find something for everyone on your list at SouthPark including the new Original Chesapeake Factory and Morton's The Steakhouse!

Paramount's Carowinds Theme Park

Local Attractions

RESTAURANTS IN THE NEIGHBORHOOD

 <p>4331 Barclay Downs Road, 704-365-1330 The World's Best Place for Steaks</p>	 <p>UPSTREAM 6902 Phillips Place Court, 704-556-7730 Seafood including Sushi Bar</p>	 <p>SouthPark Mall, 4400 Sharon Road, 704-916-2300</p>	 <p>SouthPark Mall, 4400 Sharon Road, 704-770-0076</p>
 <p>4345 Barclay Downs Road, 704-602-9800</p>	 <p>6705-B Phillips Place Court, 704-552-7256 Fine Dining, Business Attire</p>	 <p>6801 Morrison Boulevard, 704-367-9463 Upscale French Cuisine</p>	 <p>4335 Barclay Downs Drive, 704-442-5522 THE Seafood Restaurant</p>
<p>VILLAGE TAVERN Rotunda Building, Barclay Downs, 704-552-9983 Casual dining with large terrace for outdoor seating</p>		<p>ZEBRA Restaurant and Wine Bar Charlotte, North Carolina 4521 Sharon Road, 704-442-9525 Continental Fare</p>	
<p>PANCAKE HOUSE <i>Pancakes as you like them!</i> 4736 Sharon Road, 704-553-8364</p>		<p>P.F. CHANG'S CHINA BISTRO™ 6809-F Phillips Place Court, 704-552-6644</p>	
 <p>DEAN & DELUCA, 6903 Phillips Place Court 704-643-6868 Specialty Food & Wine</p>	 <p>Sushi 101 1730 E Woodlawn Rd, 704-672-0990</p>	 <p>4725 Piedmont Row Drive 704-552-5502</p>	 <p>BRIO 4720 Piedmont Row Drive Suite 150 704-571-4214</p>
 <p>6000 Fairview Road 704-556-1115</p>	 <p>Ben & Jerry's Ice Cream 7800 Fairview Road 704-364-7600</p>	 <p>7822 Fairview Road 704-364-5755 Fine Dining</p>	 <p>6401 Morrison Boulevard 704-367-1808</p>
 <p>SouthPark Mall 704-364-6280</p>	 <p>6401 Morrison Blvd., Suite 1B 704-364-6255</p>	 <p>Specialty Shops on the Park, 6401 Morrison Blvd. 704-364-9334</p>	 <p>Foxcroft Village 7814 Fairview Road 704-295-0707</p>
 <p>HARPER'S 6518 Fairview Road 704-366-6688</p>	 <p>4620 Piedmont Row Drive 704-554-8811</p>	 <p>1900 Mexican Grill 5110-1 E. Park Road 704-362-2334</p>	

PLUS THE FOOD COURT AT SOUTHPARK MALL IS PRACTICALLY IN OUR BACK YARD!

Auntie Anne's...Great Steak & Potato Company...Starbucks...Bistro 7...
Chick-fil-A...Chinese Gourmet Express...Maki of Japan...
Nestle Toll House Café by Chip...Showmars...Subway...The Counter...Villa Pizza



OUR CREW ...

Ready to perform every service for your accommodation needs...



JOANIE KASTL
The General Manager
Extension 150



GLORIA MELLA
Director of Sales & Marketing
Extension 145



BILL SCHEER
Director of Operations
Extension 140



COLLEEN BADAMI
Controller
Extension 138



SCOTT CLEMENTS
Guest Services Manager
Extension 143



CAMERON HALL
Sales Manager
Extension 151



CORIE BLOCKER
Director of Housekeeping
Extension 172



Warm, Comfortable, Friendly

Welcome to Doubletree.

**For nationwide reservations at any
Doubletree, Doubletree Club or
Doubletree Guest Suites Hotel, please
call the toll free number.**

Touch 9 + 1 + 800 + 222-TREE.